

***Beagle Software***  
***SlideShow***  
***User's Guide***  
***Version 1.3.0***

**Copyright© 1999 Beagle Software**

Beagle Software provides this publication “as is” without warranty or any kind, either expressed or implied. The use of the software accompanying this documentation is subject to the Software License Agreement contained herein.

MS-DOS, Windows 95, Windows 98 and Windows NT are trademarks of Microsoft, Inc.

## Table of Contents

<b>Getting Started</b>	
Introduction	4
Quick Start	6
Software Installation	6
Software Removal	7
<b>Program Reference</b>	
Main Screen	8
Sections	
Control	9
Show	9
Slide	10
Options	10
Status	11
Menus	
File	11
Wizard	11
Slide	12
View	12
Mode	13
Control	14
Options	14
Help	15
Full Screen Control Bar	16
Browser Type	18
Registration Screen (Trial versions)	20
Enter Key Code Form (Trial versions)	20
Ordering Information (Trial versions)	20
About Screen	20
Splash Screen	21
Tip Screen	21
<b>Show Reference</b>	
Wizard Start Page	22
Show Editor	23
Add/Edit Slide	25
Play/Record Sound	26
Make Show from Directory	27
Make Web Show	30
Audit Results	32

**Technical Reference**

Starting SlideShow Automatically	34
Command Line Mode	34
Instruction File Reference	35
Placing a web show on a CD	37
Import/Export Bookmarks	37

**User Guide**

Ways to use SlideShow	38
Features of the Pro version	39
Making a Multimedia Slide Show	39
Making a Web Based Show	40
Web Show Controls	41
Deploying a Show on the WWW	41
Show Control Options	43

**Technical Information**

How SlideShow works	44
System Demands of SlideShow	44
SlideShow Specifications	45

**Technical Support**

Troubleshooting	
Image won't display	45
Browser starts but won't work with SlideShow	45
My browser won't start with SlideShow	45
Certain features in SlideShow aren't available to me	46
IE won't stay minimized when show is running	46
Program focus shifts to browser when show is running	46
There is no sound, though sound file is assigned	46
Web Shows fail to run	46
Registration screen appears at startup	47
SlideShow Diagnostic Routine	47
Obtaining Technical Support	48

**Beagle Software**

General Information	48
Ordering Information	49
Warranty/License Agreement	49
Other Beagle Software Products	50
Contact Information	52

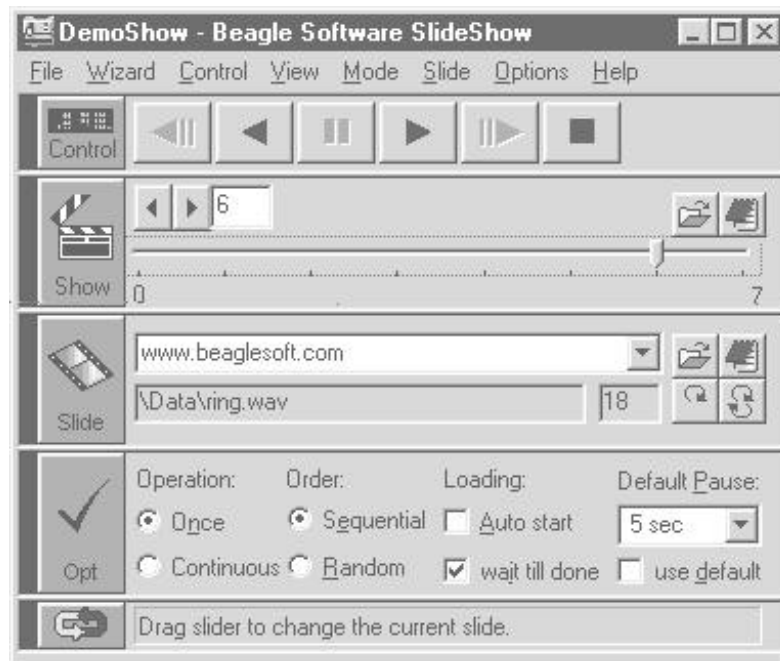
## Getting Started

### Introduction

Beagle Software SlideShow lets you create multimedia shows and play them using your web browser. Shows can be made up of a combination of your favorite web pages, images or documents accompanied by your favorite music or voice-over. Create, run and edit your own shows easily using your existing web browser. Use SlideShow as a presentation engine, a training tool or an image album.

### SlideShow

- Is a presentation engine for Internet Explorer or Netscape Navigator.
- Automates web and image viewing.
- Lets you automatically channel surf your favorite web sites.
- Lets you create themed tours of the web.
- Lets you share your web experience with others.
- Lets you create stand alone web shows.



## Benefits

### Easy to use

- It's easy to make a show from images, web pages or HTML documents.
- Uses the browser you already have and know how to use.
- Shows can be any kind of file or format supported by browser.
- Shows can be created and saved for future showings.
- Sound files use computer's sound card. Sound files can be played and recorded on the fly.
- Use your favorite tools to create slide content.

### Multiple presentation options

- **Full screen mode**  
Full screen images are great for presentations or displaying web pages
- **Continuous play**  
Play slides in a continuous loop.
- **Auto re-load**  
Reloads and refreshes the same web page at defined interval.
- **Random play**  
Plays slides in random order
- **Auto Start**  
Start SlideShow automatically from the command line for hands free operation.

### Making Shows

- Shows are made up of a collection of slides.
- Slides consist of a reference to image, URL or text. Slides can also have an accompanying sound file.
- Slides can be added, edited, skipped or deleted from shows anytime.
- Multiple shows can run concurrently in different browser windows.
- Add slides singly or make show from directory of existing

beagle software

images.

- Save shows to file for later use by SlideShow or save as HTML files accessible from any browser.

### **Show Presentation Options**

- Sequential or random slide selection during show play.
- Once or continuous action lets you control play.
- Individually timed or default timed slides gives you control on how long a specific slide will be shown.
- ‘Wait till done’ option waits for all elements of a file to load before continuing – useful for web documents.
- Full screen mode gives a theatre like presentation covering the entire display screen.

### **Requirements**

- Internet Explorer or Netscape Navigator. Also supports other DDE compliant browsers.
- Windows 95/98 or Windows NT/2000
- Sound card needed for sound file playback and recording.

## **Quick Start**

To get SlideShow up and running:

1. Install SlideShow.
2. Make sure web browser is installed
3. If using web pages then make connection to the Internet.
4. Start SlideShow program.
5. Press the **“Show”** button.
6. The demonstration slide show will start and run through a quick introduction.

To create a new show, use the new show wizard found under the Wizard menu.

## Software Installation

### To install SlideShow:

- 1 Place the CD-ROM in the drive. Installation will start automatically when the CD-ROM drive is closed.
- 2 You can also start the CD-ROM manually. From the Windows **Start** menu in the lower left corner select the **Run** command from the menu
- 3 Enter **x:\setup** in the Open box where **x** is the drive letter used (typically D or E). Press **OK**
- 4 Follow the instructions from the installation wizard. For a typical installation you can accept all defaults offered by the wizard.
- 5 When asked for the key code, enter the key code you copied down (above) exactly as written in the Enter Code screen on the registration page, or if already in SlideShow choose the **Register** option under the **Help** menu.  
*Key codes are case sensitive.*
- 6 If requested, you may need to reboot the system to install the new DLLs that were just installed.
- 7 When installation is complete, Start SlideShow from the **Start/Programs/Beagle Software/SlideShow** menu.
- 8 SlideShow will inform you that it is initializing options for the first time.

Installing SlideShow options version X.X.  
X, for the first time

**Note:** If necessary you can install SlideShow directly over a previously installed version. Some SlideShow Options have changed so you may need to reset some time setting or display options after starting the new software.

## Software Removal

Removing SlideShow from a system will remove all executables, help files, log files, registry settings and DLL's that are registered exclusively to SlideShow.

### To Remove SlideShow

To perform an uninstall of SlideShow:

- 1 If running, exit SlideShow.
- 2 Select the **Uninstall** program (uninstall.exe) from the **Program Files -> Beagle Software -> SlideShow** directory.
- 3 Follow the uninstall wizard. Accept the defaults.
- 4 If asked if you want to remove shared DLL's — it is safest not to remove the DLL's in case they are in used by another program.

## Program Reference

### Main Screen

The SlideShow main screen is the focal point for opening, editing and running slide shows. The main screen serves as the central point where the slide show is created and run

When the main screen is started it starts an instance of the web browser you have selected for displaying slides. A linkage is established between SlideShow and the browser that allows SlideShow to control the content and appearance of the browser session. The browser can still be separately administered but SlideShow will take control of the session when requested.

The main screen is made up of several functional sections stacked atop one another. These are (from top to bottom), Menus, Control, Show, Slide, Option and Status.

### Menus

(see the menu reference that follows)



## **Control Section** (remote control button)

Contains the navigation controls.

### **Remote Control button**

During a show the remote control button is enabled to go back, pause and forward in a show using the mouse buttons:

**Left button** goes back to the previous slide.

**Center button** pauses the show.

**Right button** advances to the next slide.

### **Control Buttons**

**Begin** Go to beginning of show (show mode only).

**Back** Go back to last slide shown.

**Pause** Pause/restart slide show (show mode only).

**Forward** Go forward one slide.

**Ending** Go to end of collection (show mode only).

**Stop** Stop current action (show mode only).

## **Show Section** (movie button)

Controls to start slide show and display show progress.

### **Show Button**

Begin the slide show with the options selected.

### **Show toolbar**

**Open** Opens a dialog to choose an existing SlideShow file.

**Edit** Opens the current SlideShow in the Show Editor.

### **Change slide arrows**

Change the slide number up (right arrow) or down (left arrow).

This control positions the next slide to show. To display the slide, press the Slide button or start the show by pressing the Show button.

### **Show Slider**

Drag slider to change the current slide. If activated during a show it will change the next slide to show. If the show is not active then press the Slide button to show the current slide.

**Tip:** The main program icon in the upper left corner of the application shows the state of the show:

**Green:** show is running

**Yellow:** show is paused

**Red:** show is stopped.

## **Slide Section** (film button)

Controls to view and edit an individual slide.

### Slide Button

Displays a single slide in the browser.

### Slide toolbar

**Open** Opens a new slide document.

**Edit** Edit the current slide settings in the Edit Slide screen.

**Reload** Reloads (refreshes) the current document in the browser.

**Auto-reload.** Reloads the current slide automatically at the default pause time specified.

### Slide file pull-down

Selects a slide to show. Slides can be entered in the box or retrieved from the pull down button, which shows the last several documents presented to the browser.

### Sound file label

Shows the optional sound file playing with slide.

### Pause time label

Pause (in seconds) to wait after displaying slide

**Hint:** Clicking on the sound file or pause time box opens up the Slide Edit screen.

## **Option Section** (check button)

Contains the slide show presentation options, which affect how the slide show is run.

<b>Operation:</b>	How many times to run.
<b>Once</b>	Run the collection once.
<b>Continuous</b>	Run the collection continuously.
<b>Order:</b>	Order options: Sequential, Random
<b>Random</b>	Run the collection in random order.
<b>Sequential</b>	Run the collection in order.
<b>Loading:</b>	Behavior of browser when loading slides.
<b>Auto Start</b>	Start current show automatically the next time starting Slide-Show.
<b>wait till done</b>	Wait till slide is done loading before loading next slide.

**Default Pause:** Set default time to pause for all slides.  
**Pause Interval** Specify the default interval between slides.  
**use default** Override the individual slide pause time with the default.

**Save to file...**

Save the current options to a file which can be used as an instruction file when starting SlideShow .

**Browser**

Select the browser you want to use with SlideShow .

## **Status Section**

Contains the status bar, which provides information about system status and individual field instructions.

### **Status Bar**

Shows system status and field instructions.

## **Menus**

### **File Menu**

Actions for SlideShow collections and program exit.

#### **New**

Create a new instance of SlideShow or a slide collection

#### **SlideShow Window**

Create a new SlideShow application / browser pair.

#### **New Show**

Create a new, empty slide collection. Opens the Edit Show screen.

#### **Make Show from Directory**

Make a SlideShow collection from a group of files in a directory. Create a slide for each file in the directory.

Opens the **Make Show from Directory** screen.

#### **Open**

Open an existing show. Presents user with "Open File" screen and allows selection of an existing show, saved as a text file (with a .txt suffix). If there is a show open with un-saved changes it asks user if the changes to the current show should first be saved.

#### **Edit**

Edit the current show. Opens the Edit Show screen.

## **Save**

Save the current show to file.

## **Save As...**

**File** - Save the current show to a file name selected in the "Save As" file dialog.

**Web Show** – Opens the Make Web Show screen, used to create a web show from the current collection.

## **Import and Export...**

**Import Bookmarks** Select and import an existing bookmark file to use as a basis for a new slide show.

**Export Bookmarks** Export the current show as a bookmark file to be opened and used in a web browser .

## **Exit**

Exit the current window, if the last window, exit the application. Prompts user to save changes to the show or changes to the settings, if either have been altered during the session.

## [Wizard Menu](#)

Calls up the Wizard Start screen containing the new show wizard and recent show list. On the Recent tab you can select an existing show. Starting the new show wizard guides you through creating a new locally-based or web-based show.

## [Slide Menu](#)

Single slide commands. View or edit individual slides in a show.

### **Open**

Select a new slide document.

Pick any file type supported by the browser.

### **Edit**

Edit the existing slide by opening the slide edit screen.

## [View Menu](#)

Display options for the main screen and browser.

Sections with a check are displayed in the main screen; unchecked sections are hidden.

### **Menu**

Hide the menus on the main screen.

### **Control**

Display/hide the Control section on the main screen.

**Show**

Display/hide the Show section on the main screen.

**Slide**

Display/hide the Slide section on the main screen.

**Options**

Display/hide the show Options section on the main screen.

**Status**

Display/hide the status bar on the main screen.

**Tip:** Sections can also be displayed/hidden by clicking on the thin blue rectangle at the left or top of the section.

**Always on top**

Force the main SlideShow screen to be on top of all other screens. The main screen will appear in all views no matter which application is in focus.

**Full Screen**

Enters the full screen browser mode. In this mode the browser fills the entire screen except for a **Control Bar** at the top of the screen which offers control options. This view is appropriate when you want the web page or image to completely fill the screen.

**Note:** Currently this mode only works with Internet Explorer version 4 or 5 under Windows 95 or 98. DDE automation does not currently support the Full Screen mode. On browsers that don't support this mode the Full Screen Control bar is displayed with the menus shown. The full screen mode can be simulated on these browsers by maximizing the browser screen and hiding the toolbars and menus.

## Mode Menu

Select the mode of operation that SlideShow is currently running in.

**Normal**

System is waiting for command.

**Auto-Reload**

Reload the current slide at the specified pause time interval.

**Show**

Toggle the Show mode On/Off. When checked system is currently running a slide show.

## Control Menu

Changes which slide is shown in browser during a show. With the control buttons you can move forward or back, pause or stop the currently open show.

### **Beginning**

Go to the first slide in the show.

### **Back**

Go back to last slide shown.

### **Pause**

Pause/restart slide show.

### **Forward**

Go forward one slide.

### **Ending**

Go to the last slide in the show.

### **Stop**

Stops current show or reload action – entering into the ready mode.

### **Reload**

Reloads the current image, document, or URL.

## Options Menu

Options for the active slide show presentation. When changed, most options take effect on the next slide shown.

**Operation**      How many times to run the show.

### **Once**

Run the show once. If currently in the sequential order mode SlideShow will play each slide once. In the random order mode SlideShow will randomly pick slides till the count equals the total number of slides in show.

### **Continuous**

Run the show continuously.

**Order**              Run the slides in serial or random order.

### **Sequential**

Run the collection in the numeric order specified in the show.

### **Random**

Run the collection in random order. Since the random slide is generated for each successive slide, certain slides may be repeated or omitted over the course of the show..

**Loading**      Behavior when loading slides .

**Auto Start**

Starts current show automatically the next time you start SlideShow

**wait till done**

Wait till slide is done loading before loading next slide. The timing of the slide begins when the slide begins to load. If **wait till done** is selected, the system will pause for the time specified or till the slide is finished loading, whichever is longer.

**Pause**      Default time to pause for all slides .

**use default**

Override the individual slide pause time with the default time specified.

**Tool Tips**      Choose if tool tips are to be displayed.

Tool tips provide additional 'pop-up' information about the control or field on the form.

**On**

Display tool tips for all screen components.

**Off**

Turn off tool tips.

**Save to file..**      Save options in a instruction file.

Saves the current options settings as a show instruction file. Presents a dialog to choose the filename and location of the file to save.

**Browser**      Change linked browser.

Opens the Browser type screen to specify browser type.

## [Help Menu](#)

On-line help options and access to the Beagle Software web site.

### Help Topics

Displays a list of help topics.

### Search

Search the help system for a key word or topic

### Using Help

How to use help.

### Tips

Opens the tip of the day Tip Screen

### Beagle Software Web Site

Opens a new web browser window which opens Beagle Software's home page.

### Register... (Trial version)

Opens the main Registration Screen, which explains registration options.

### Upgrade Software

Opens a new web browser window which opens the SlideShow software update page. This page contains information about the most current version of SlideShow and the upgrade options available.

### About

Displays program version, system and program copyright information.

## Full Screen Control Bar

When in the full screen mode the browser fills the entire screen except for a thin band across the top of the screen. This band (normally black) is the control bar which provides access to the basic show navigation functions in SlideShow. This control bar consists of control and view menus accessed from the left and right click mouse buttons, respectively. The control bar allows you to control the slide show currently running in the browser window without displaying the main SlideShow screen.

**Note:** Currently this mode only works with Internet Explorer version 4 or 5 under Windows 95 or Windows 98.

DDE automation (used with Netscape) does not currently support the Full Screen mode. On browsers that don't support the Full Screen mode the Full Screen Control bar is displayed with the menus shown. To simulate the full screen mode the browser screen can be maximized and toolbars and menus can then be hidden.

#### ***To access the menus:***

Position the mouse over the control bar at the top of the screen and click the left button for control, right button for view.



**Control Menu** (left mouse button)

**Back**

Go back to last slide shown.

**Pause**

Pause/restart slide show.

**Forward**

Go forward one slide..

**Stop**

Stop current action.

**Reload**

Reload the current image, document or URL.

**View Menu** (right mouse button)

**Start Show**

Start the SlideShow.

**Color...**

Change the color of the status bar on the top of the screen. This is normally black but can be changed to match the background color of the web browser.

**Menus Visible** (center mouse button)

**Menus Visible**

Make the menus visible. Useful when you want to use the shortcut keys in the full screen mode.

**Tip:** To change the background color in Internet Explorer, change the View/Internet Options/Colors/Background color option. If changed to black then images will appear in a field of black.

**Controls...**

Brings back the main SlideShow screen.

**Normal Size**

Returns the browser to normal size and reopens the main screen.

## Browser Type

The Browser Type screen allows you to choose the web browser that SlideShow will use to display slides. SlideShow supports the recent releases of Microsoft's Internet Explorer and Netscape's Navigator. SlideShow will also work with many DDE compliant browser that follows the Spyglass Software Development Interface. This interface is composed of a number of generic, platform independent automation actions that lets SlideShow control the browser's actions.

SlideShow will use either DDE or OLE automation to control the browser depending on the browser and operating system. Typically OLE offers more automation features and controls compared to the DDE interface.

Choose the browser and version that you wish to use and that is installed on your computer. If you do not know the version of your browser then open the browser and select the About menu selection under the Help menu.

### Browser Version

#### Internet Explorer

Version 2 IE version 2, (the original — limited support)

Version 3 IE version 3

Version 4/5 IE version 4 or 5, OLE support in Windows 95/98

**Note:** The original version of Windows 95 shipped with Internet Explorer Version 2 reported the version as 4.40.xxx This is not version 4 of Internet Explorer. If you are using the original Internet Explorer that came with your computer that is more than 3 years old it is most likely version 2.

#### Netscape Navigator

Version 2 Netscape version 2

Version 3 Netscape version 3

Version 4 Netscape version 4

#### Other DDE Compliant Browsers

If specifying a DDE compliant browser then:

- The browser must be installed and registered with Windows.
- You need to know the DDE application name of the browser.

For a current list of supported browsers, check the SlideShow FAQ on the Beagle Software web site.

#### Application Executable            DDE executable name

Program name for executable. Enter the program name including the ".exe" extension.

#### Browse

Find the DDE program in the Windows file system. Look under the

Program Files section for a start. Do not select shortcuts.

**Hint:** Use the find utility under the Windows menu if you have trouble locating your browser.

**Application Name** DDE specific application name.

Hint: Often the application name is the same as the executable name without the ".exe" suffix.

**Automation Window**

The automation window shows the type of automation that will be used (DDE or OLE) to control the browser. The automation depends on the supported automation methods for the browser selected and the operating environment.

**Test Button**

Test the browser selected. This will attempt to start the newly selected browser. The browser you were using should stay active after the test.

**OK button**

Saves the new browser type. SlideShow makes the following checks when a new browser has been selected:

- Checks that the browser selected is installed and registered in Windows.
- Unloads the browser currently running.
- Attempts to start the new browser.
- Even if the test start of the new browser fails, the new browser settings will be saved when you press 'OK'. Upon restarting SlideShow the new browser will be started.

**Help** For on-line help.

**Cancel** Cancels any changes and return

## Registration Screen (Trial versions)

beagle software

The Registration Screen shows the current status of your evaluation period and presents registration options. It is displayed whenever the product is under evaluation and not yet registered.

**Pro Version**

Select this button to find out more about SlideShow Pro. Registered users are automatically upgraded to the Pro Version when they register their software.

**Register Now button**

Select this button to begin the registration process.

**Enter Code button**

Once the software is purchased you will be given a unique Key Code to enter to register the software internally. Select this button when you are ready to enter the Key Code.

**OK button**

Closes the screen and continues to run program.

**Quit/Cancel button**

This exits the registration process. The quit button, when presented, exits the program.

## Enter Key Code Form (Trial versions)

This form receives the entry of the product key code, required to register the software internally. The key code is given to registered users of the software. The key code enables the license for the SlideShow Pro version of the software.

**Key Code Input Field**

Enter the code exactly as it was written observing all capitalization and punctuation. Press the <Enter> key or the OK button when done.

## Ordering Information Screen (Trial versions)

The Ordering Information Screen describes the various ways to purchase SlideShow software.

**Web Site button**

This button starts the local web browser to open the Beagle Software order page.

**E-Mail button**

This button starts the local E-mail portion of the Web browser to request an order form from Beagle Software.

**Order Form button**

Presents an order form from the help system that can be filled out, and then mailed, E-mailed or faxed to Beagle Software for software registration.

**Cancel**

Returns to the main registration screen.

## About Screen

Shows product version and copyright information

**OK button**

Closes the screen.

**System Info**

Presents the Microsoft System Information screen, giving information about the

system. Microsoft System Information is a basic tool for gathering system configuration information.

## Splash Screen

The Splash screen displays product and version information and is displayed only at startup.

## Tip Screen

The Tip screen displays the "Tip of the Day" -offering tips in the use of the SlideShow application.

### **OK button**

Closes the screen. This button will save any changes you have made to the Tip screen.

### **Next Tip button**

Shows the next tip from the tip database.

### **Show Tips at Startup checkbox**

Check this box if you want the tips to appear at program startup. This check box also appears under the display tab of the options screen.

## Show Reference

### Wizard Start Screen

The Wizard start screen is the first screen shown when the New Show wizard is started from the Wizard menu or at program start. It lets the user choose an existing slide show or create a new show.

Types of shows that can be begun with the wizard:

- new shows
- web shows
- image albums
- shows from bookmarks

#### Recent Tab

**Current** - Opens the last show viewed.

#### **Show List**

Shows a list of recently opened shows.

Includes the show file name, number of slides and the last show modification date.

Click on the show file name to choose the show to load.

#### **More**

Opens up the file dialog to find a slide show in the file system.

#### New Tab

Pressing the **New Show** button starts the New Show wizard which walks you through the process of creating either a locally run show or a web based show. The process of making a new show is broken down into a series of steps. Each of the options ends at the appropriate screen for making the type of show desired.

For those making a web show, the **Make Web Show** screen is presented with the options filled in based on the answers given to the wizard's questions. Show options can then be reviewed and the web show files can be generated.

#### Show Wizard at startup

Loads the Wizard start screen each time SlideShow is started. The Wizard can also be started at any time from the Wizard menu.

#### Cancel

Returns to SlideShow main screen.

#### Help

Presents on-line help.

## Wizard Screen

This form offers instructions and options for questions in the Wizard. Generally, it is necessary to select both the option (Yes, No) and also press a navigation key (Next, Back, Cancel) at each step.

## Wizard Input Screen

This form offers instructions and asks for input for questions in the Wizard. Generally, it is necessary to fill in the field or fields and press a navigation key (Next, Back, Cancel) at each step.

## Show Editor

The Show Editor screen (**File->Edit**) allows you to edit individual slides in a show. You can open shows and manipulate the slides in the show. Slides can then be individually selected for editing, viewing or playing. Dragging a slide into a new position in the list will also change the order of slides. Slides can also be created by dragging a file from another program onto the slide list.

## Editing Toolbar

The Show Edit toolbar contains the major options for editing slides and shows:

**Open** Open another show.

**Save** Save the changes to the current show to file.

**Edit** Edit the document, sound file or pause time for the slide.

**Add** Create a new slide at the end of the collection.

**Copy** Create a copy of the highlighted slide and insert it below the existing slide.

**Insert** Insert a new slide immediately below the current slide.

**Skip** When running the show, skip this slide. When a slide is designated as skipped the icon changes to a yellow warning icon. Skipped slides remain in the collection but are not played in the show. When the show is re-opened skipped slides are reset to the normal play mode.

**Delete** Delete the slide from the show. This does not delete the original image or document, just the reference to the file in the show.

**View** Show the current slide document in the browser.

**Play**. Play the sound file of the current slide and open the Play/Record screen.

## Slide List

Shows a list of slides in the show. When played in Sequential orders lides are played in numeric sequence. To select a slide in the list click the left column (the slide number) of the slide to select.

### **Columns**

**Number** - Number of slide in current show. This number is assigned when the show editor is started. If you change the order of the slides then the next time the slide editor is opened the numbering of the slides will reflect the new order.

**Slide file** - Path of the slide document to show in browser.

**Sound file** - Path of the optional sound file to play.

**Pause** - Individual pause time for this slide in seconds.

**Shown** - Number of times this slide has been shown since last loading or saving the show.

**Last shown** - Time (24-hour format) slide was last displayed.

### **Hints**

- Press the leftmost "Number " column to select the slide.
- Hidden rightmost columns show usage information.
- Expand the slide list and form by dragging the left edge of the screen to the right.
- Selected slides can be deleted, skippe d, copied, viewed or played from the toolbar.
- Shows can be alphabetically sorted by any of the column headings by clicking on the column title.
- Double click the slide to open the edit slide form.
- Once selected, slides can be dragged into a new position.
- Right clicking the mouse will give the slide edit options in a pop-up context menu.
- Image or other file types can be dragged from Windows and dropped into a show.  
To drag and drop a file into the Show Editor:  
Select the file from Windows Explorer.  
Hold the left mouse button down as you drag the file over the slide list box of the show editor.  
After you release the mouse button the file will be added as a slide at the end of the show.

**OK** Update the current show with the changes.

**Cancel** Press to cancel any changes made on the show and return.



## Add / Edit Slide Screen

The Edit slide screen permits users to edit and add individual slides. The screen allows for changing the slide document, sound file or the pause time

### Slide

Enter the URL or complete file name of the document to view. Slides can also be defined by dragging a file from another program into the slide list box.

**Tip:** If specifying a file resident on the local computer, be sure to use the full path including the drive letter. The browser then knows it's a file: for example: C:\Program Files\Beagle Software\SlideShow\Data\beagle.jpg.

### Slide toolbar

**Select** a new slide

**View** the slide document in the browser.

### Sound file

Enter the file name of the sound file to play. Sounds can also be defined by dragging a file from another program into the slide list box.

**Tip:** Unlike the slide file name, the sound file name can use a local path relative to the location of the program. For example: Data\welcome.wav.

### Sound file toolbar

**Select** another sound file

**Play** the sound file and open the Play/Record screen.

### Pause Time

Slide pause time. Enter the time in seconds to display the slide.

**Note:** The pause time is the time to pause from the beginning of the loading process to the loading of the next slide.

### Skip file

Check to skip the slide when playing the show

### OK

Press to keep the changes on this slide and return.

### Cancel

Cancels any changes and return to previous screen.

## Play / Record Sound

Play and record sound files used to accompany slides. Sound files serve as an accompaniment or background to the show slides. They can be music, voice or any kind of wave file supported by the native sound card. If the sound card has recording capability then speech or music can be recorded to use in shows.

**Note:** A sound card and supporting hardware must be installed for the sound feature to work.

### Record Panel

This panel contains the recording buttons.

#### Record

Records a new sound file or rerecord over an existing sound file. Once you press the record button then the "In Service" light will come on indicating that recording is underway. Press the stop button to end recording. Replay the new recording with the Play button.

**Technical Note:** Recording is done using 8 bit PCM at a 11 kHz sampling rate.

#### Stop

Press to stop recording. (Only enabled during recording.)

### Play Panel

This panel contains the playback controls.

#### Play

Press to play the phrase shown in the sound file field.

#### Left/Right Volume slider

Adjust the left/right channel volume.

**Note:** The volume settings are the same settings used by Windows and will affect other applications that use sound.

#### Sound File

Enter the complete path and file of the wave speech file phrase to play or record

#### Open

Open the file dialog to choose a sound file.

#### Play

Play the current sound file.

#### OK

Save the changes made to the sound file and return.

#### Cancel

Exit screen, not saving changes

## Make Show from Directory

This screen (accessed from the **File->New** menu) lets you make a show quickly of any collection of files on your computer. The make show utility creates a show with each file listed in a single slide. The utility does not copy the files -- it creates a reference to the files in the slide. The files themselves can be changed or modified after the show is created. The show will be automatically updated as long as the file name stays the same.

You can make a new show from any directory containing files that are viewable in the web browser, including images (JPEGs, GIFs), web pages (HTML), text files and any other file formats that are supported by the browser. The target directory can contain a mix of these files.

After selecting the directory a slide is made containing a reference to each of the files. Accompanying sound file and pause time can be specified for each slide after the show is generated.

**Note:** To make a show from files or web pages from different directories create a new file (**File->New->New Show**) which opens the Show Editor

### Choose Drive

Select the drive containing the directory. This can be a fixed hard drive, floppy drive, CD-ROM or external storage device like a Zip drive.

### Up button

Move up a directory level. This will 'move up' the directory tree towards the main directory.

### Directory List

Displays all the directories in the selected drive. Clicking on the yellow folders will expand directories. Choose the directory to make a collection from by clicking it once with the mouse, then pressing the **OK** button.

### All Files / Selected Files options

The **All Files** option automatically selects all the files within a directory when you press the **OK** button. If you want to select

individual files then use the **Selected Files** option. The Selected Files option will let you choose individual files in the directory with the mouse in the File List box.

**Note:** The All Files option adds slides in order that the files were created, the oldest files are first and the most recently created files last. The Select Files option sorts files alphabetically by file name.

### Path - Selected Directory

Shows the directory selected to make a show from. There must be an entry in this field for a show to be made either by clicking on a yellow folder in the directory tree or by manually entering the directory path and name in the field.

### Filter

The file selection filter determines which files in the selected directory will be shown in the file box. The default filter `*.*` shows all files in the directory. To select only the web pages in the directory change the filter to `*.htm`. The filter only works when the **Selected Files** option is selected.

Hint: In addition to using wildcard characters `*`, you can also use multiple patterns separated by semicolons (`;`). For example, `*.gif;*.jpg` in the filter would return a list of JPEG and GIF image files for a given directory.

### File List

The file list gives a listing of all files that have passed through the filter in a directory. These files, when selected, will be included as slides in the slide show. Files selected should be in a format that can be displayed by the browser.

The file list is active only when the **Selected Files** option is selected.

- To select individual files click on the files once with the left mouse button.
- To select multiple files individually hold down the **Cntrl** key while pressing the left mouse button.
- To select a range of files select the top file with the left mouse button then select the bottom file in the range by pressing the **Shift** key while pressing the left mouse button. This will select the files selected and those in between
- Selected files are shown in highlight.

- Use the Filter (described above) to select files of a specific type or name.

## OK

Press to make show from directory and files selected.

- If the **All Files** option is selected a show will be generated from all files in the selected directory. There must be files present in the directory.
- If the **Selected Files** option is chosen then only selected (highlighted) files will be included in the show. There must be at least one file selected for a show to be created.

## Cancel

Cancel this screen and return.

## Help

For on-line help.

## Make Web Show

With this form (accessed from the **File->Save As->Web Show** menu) you can make a web show from an existing slide show. Using the existing collection of slides, SlideShow will generate two web pages, a *start page* and a *web show page*. The start page provides the starting point in the show, the first page from which to begin the show. The web show page contains the show engine and references to all the slides in the collection. SlideShow does not generate the actual web pages for the show - it uses the existing files, images and web sites to display. The same sound files included in the slide show can be played by the web show if the browser supports playing of wave files.

Running a show involves moving through the sites or files using the web show control page generated by SlideShow.

To make a web show:

- Create a slide show, edit and review it.
- Select the options for the web show and run the web show audit.
- Generate the web show from this form by pressing the **Make Show** button.
- Test the web show using the **Test** button on this form.
- Relocate the web show by copying the two HTML files where they will be used.
- Copy any image or sound files referenced in the show to the correct location on the web server.

**Hint:** You can also use the new show wizard to guide you through creation of a web show.

## Show Type

### Locally based show

Show will be run locally on this computer using a web browser instead of SlideShow.

### Web based Show

Show will be posted and viewed on the web.

## Starting Web Page

### Start Page

File name of the starting or "home" page of the web show. Typically ends in ".htm" or ".html"

### Start Automatically

Starts the web show automatically when the **Start Show** button on the Start Page is pressed and the show control windows is opened. This is equivalent to the user pressing the **Auto** button when the web show control

page is opened.

## Local Directory to place Web Show Pages

### Path

Directory in which both web pages will be placed.

### Browse

Select a directory for the web pages.

## Relocate files with the following path

Web based shows must reference files with respect to the web and cannot contain references that are set in the Windows file system -- for instance files referenced to *c:\my documents* will not work on the web.

This filter allows you to replace the references to the local paths to those used on the web site. For instance you might change the reference from *c:\My Documents\Pictures\* to *images/*.

When the web page is created the references for each slide will be checked and any slide with path specified will have its path altered in the web show by the filter.

Note that the filter changes only the reference to the files in the web show and does not relocate or change the files themselves.

### Replace:

Specify the path that will be found and replaced in the current show.

### With:

Specify the new path (if any) on how the slides will now be referenced.

### Hints:

To check for locally referenced files, first run the **Audit** button on the make web page form.

To reference a local path use a dot '.' In the **With** box to indicate the local directory when replacing an absolute path (a path with drive letter and colon.)

To remove a local path from slides in a show enter the path to be removed in the **Replace** box and leave the **With** box empty.

## Web Show Page Settings

### Web Show Page:

Filename for the web show page. Typically ends in ".htm" or ".html"

beagle software

**Show Title:**

Enter the page title. This will be the title shown in the web show page.

**Pause Between Slides:**

Specify the interval between web pages during the show.

**Sound:**

**use sound** Play sound file with page, if available

**Audit**

Runs the web show audit using the current show and the settings selected. For an explanation of the report see the web show Audit Results section that follows.

**Make Show**

Press to generate the web show. Generates the two web pages with the names specified in the form. After creating the show a dialog will be displayed confirming the creation of the two HTML files in the directory specified.

**Test**

To view the new show in browser press the **Test** button. This opens a new browser window and loads the start page, the "home page" in the web show. This page contains a button to call the web show page which starts the web show.

**Cancel**

Closes the form.

**Help**

For on-line help.

## Audit Results

The web show Audit performs a multi-step test on the currently selected show using the settings on the form. It checks the number and types of slides.

**Sample Output:**

```
File Title: Show08-11-99
----- Web Show Files -----
Starting Web page name: StrtShow.htm
Show Control page name: WebShow.htm
Show Control page title: MyTitle
Directory to copy web show files from: C:
\Program Files\Beagle Software\SlideShow\Data\

----- Slide Information -----
Files with local paths (potential access prob-
```



```
lems):  
C:\WINDOWS\TEMP\bottom.htm  
  
Number of web pages in show: 2  
Number of referenced files in show: 19  
Total number of slides in show: 21  
Pause time between slides: 10 sec  
Approximate length of show: 210 seconds. (3.5  
minutes)  
There are no sound files in any of the slides.
```

### Explanation of Fields:

File Title: Name of original SlideShow

#### Web Show Files Information:

Starting Web page name: Starting page for show.  
File name of 1 of the 2 files generated by Slide-  
Show.

Show Control page name: Name of the page that  
contains the actual show and control buttons .

Show Control page title: Title of the web show  
page.

Directory to copy web show files from: Di-  
rectory where the show files will be placed.

#### Slide Information:

Files with local paths (potential access  
problems):

For web based shows, a listing of slides that have  
absolute paths (i.e. c:\directory)  
In almost all cases these paths will be inaccessible  
or incorrect from the web and should be changed.

Number of web pages in show: Number of URLs  
in show.

Number of referenced files in show: Number  
of files (images, documents etc) referenced in show.

Total number of slides in show: Total slides.

Pause time between slides: Time of pause be-  
tween slides in Auto mode.

Approximate length of show: The product of  
the number of slides and the pause time.

There are no sound files in any of the  
slides. Results of the show scan to see if there  
were any sound files referenced in the original show.

## Technical Reference

### Starting SlideShow Automatically

You can run SlideShow automatically to allow you to set up a show that will start and run with the show and options you want. Automatically running shows require no user interaction and are therefore suitable for installations in displays and kiosks.

Shows can be run one time or run continuously. Slides can be shown in order or shown randomly. Slides can be individually timed or all have the same default timing. The show can start in the full screen mode with the controls hidden, or in the normal mode with the controls in view. The following options are available to start SlideShow automatically:

- **Auto Start Option**

The Auto Start option, available from the main SlideShow screen, starts the current show automatically the next time SlideShow is started. The show will begin as soon as SlideShow is started and will exit when the show is complete if the 'show once' option is selected.

- **Starting from the Command Line**

SlideShow can also be run from the command line allowing it to be started from batch scripts or other programs.

- **Show Instruction File**

SlideShow can also be started from the command line with an instructions file specified. This instructions file overrides the current settings to run SlideShow with the options called out in the file. Show selection, show starting slide and show timing can all be specified in the show instruction file.

### Command Line Mode

You can launch SlideShow from the command line (Windows 95/98/NT **Run** command or MS-DOS prompt):

SlideShow can be run with the following optional command line arguments:

```
<program_path> SlideShow.exe [debug] [options <options file>] [fullscreen]
```

**Arguments:**

**debug** – run SlideShow in the trace mode.

**options <options file>** run SlideShow with the options specified in the options instructions file

**fullscreen** Start SlideShow in the full screen mode. In the full screen

mode the browser fills the entire screen and the main SlideShow screen is hidden behind the browser

## Instruction file Reference

SlideShow can be started from the command line with an options file specified. This options file overrides the current saved settings to run SlideShow with the options included in the options file. The options file consists of a list of label/value pairs for specifying the values of the options to be set. Any options not explicitly set in the file will use the previously saved values for the options.

An options file of the current options settings is created from the **Save to file...** selection under the **Options** menu.

### Generic format:

*"Option", value*

Where *option* is a predefined system option name and *value* is the actual value for the option.

### Formatting Requirements:

Each *Option, Value* pair must be on a separate line.

**Options** must have quotes surrounding the name (i.e. "ToolTips"); option names are case sensitive. A comma must separate options and values -- do not use spaces or tabs.

**Values:** string values must also be quoted (i.e. "IEXPLORE"), Boolean values (true or false) must be either #TRUE# or #FALSE#; numeric values (i.e. 4) need no formatting. *Note:* Using a value out of range can have unpredictable results.

### Sample format:

```
"ReloadInterval",10
"ReloadMode",1
"CarouselMode",2
"CarouselOperation",1
"CarouselFileName","C:\temp\Show08-11-99.txt"
"StartingAddress","http://www.beaglesoft.com"
"StartingSlide",3
"DisplayTips",#FALSE#
"DisplayWizard",#TRUE#
"BusyWait",#FALSE#
"AutoStart",#TRUE#
"UseDefault",#TRUE#
"ToolTips",#TRUE#
"AutoMode",2
"AutoDDEexe","IExplore.exe"
"AutoDDEapp","IEXPLORE"
```

Option	Description	Sample Value	Choices/Type
"ReloadInterval"	Pause time between slides	10	Seconds. <i>Non standard values will often function correctly but will not be displayed correctly in the control.</i>
"ReloadMode"	Type of show action: AutoReload of same slide (2), or slide changing carousel (3)	3	OFF = 1 AUTO = 2 CAROUSEL = 3
"CarouselMode"	Sequential or randomly ordered slides	2	SEQUENTIAL= 1 RANDOM = 2
"CarouselOperation"	Once or continuous show loop. A show showing once will exit when done.	1	ONCE = 1 CONTINUOUS = 2
"CarouselFileName"	Name of show loaded at startup.	"C:\temp \Show0899.txt"	Valid SlideShow file
"StartingAddress"	Address or filename of document to be displayed in browser window at startup. Usually same reference as StartingSlide.	"http://www. beaglesoft. com"	Valid address or file name.
"StartingSlide"	Number of slide to set in controls at startup. (See StartingAddress for document to be displayed in browser at start.)	3	Number of slide in current show.
"DisplayTips"	Show tip of day screen at startup	#FALSE#	#TRUE# or #FALSE#
"DisplayWizard"	Display the new show wizard at startup.	#TRUE#	#TRUE# or #FALSE#
"BusyWait"	Wait till done loading before loading next slide.	#FALSE#	#TRUE# or #FALSE#
"AutoStart"	Start show automatically at startup.	#TRUE#	#TRUE# or #FALSE#
"UseDefault"	Use default reload time	#TRUE#	#TRUE# or #FALSE#
"ToolTips"	Show tool tips when mouse over occurs.	#TRUE#	#TRUE# or #FALSE#
"AutoMode"	Type/Version of browser in use.	2	Browser version: IE v2 = 0; v3 =1; v4/5=2 Netscape v2=3; v3=4; v4=5 Other DDE=6
"AutoDDEexe"	Executable name	"IExplore.exe"	Valid executable name of browser
"AutoDDEapp"	OLE or DDE application name	"IEXPLORE"	OLE or DDE name for browser.

## Placing a Web Show on CD

Web shows can be created and placed on CD-ROMs, Zip drives, floppy disks and other removable media. This allows you to create and distribute shows to anyone with a web browser. Since the web show is self contained on the media there is no need for the person viewing to have SlideShow or even a PC!

To create a stand-alone show to be placed on CD-ROM:

- Create, edit and test a show using SlideShow.
- Create a web show from the slide show.
- Place the web show files on the CD-ROM
- Place all the referenced files or images on the CD-ROM.

Your users can start their show by simply selecting the start show page. You can also make a CD-ROM self booting by adding a configuration file in the CD-ROMs boot directory, using an autorun.inf file. Contact Beagle Software support for more information about the bootable CD-ROM setup.

## Importing and Exporting Bookmarks

SlideShow can import a bookmark file generated by Internet Explorer or Netscape Navigator to be used in creating a new slide show. When importing bookmarks, SlideShow reads the file and makes each link in the bookmark file a separate slide. Individual slides can then be edited to add sound, change pause time or change the overall order of slides in a show.

Exporting a show to a bookmark file lets you translate a slide show for use as a list of bookmarks in Netscape Navigator or Internet Explorer. When exported each slide will appear as a link in the bookmark file, which is a standard web page.

To export a show to bookmark file in SlideShow:

1. Chose **File->Import and Export->Export bookmarks**
2. Pick a directory and a name for the bookmark file.
3. SlideShow will create a bookmark file from the existing slide show creating a link for each slide in the show.

To import a bookmark file into SlideShow:

1. Chose **File->Import and Export->Import bookmarks**
2. Find the bookmark file to import.
3. SlideShow will create a new show, creating a new slide from each link in the bookmark file.

beagle software

## REFERENCE

To save a bookmark file in Internet Explorer (version 5 and above):

### **File -> Import and Export...**

Starts the Import/Export Wizard

Import/Export Selection

Pick **Export Favorites**

Export Favorites Source Folder

Pick the folder where the favorites are located

**Export to a File or Address**

Specify the file name.

## Bookmarks in Netscape Navigator

Netscape Navigator automatically saves bookmarks in a file, **bookmark.htm**, located in the **Users** profile directory off the Netscape program directory.

# User Guide

## Ways to Use Slide Show

### Browse a list of favorite web sites

SlideShow can quickly run through your favorite web sites quickly and easily.

### As a presentation tool

Present multimedia shows that mix web sites, images documents and sound files for a dynamic presentation tool.

### As an image browser

SlideShow can scan directories of JPEG's or GIF files easily. Make collections of your favorite images for regular viewing. Make an album of favorite images with your own voice over narration.

### As a training tool

Set up an instructional show to demonstrate the web, software or anything else. Include interactive html components and instructional voice-overs.

### As a demonstration program

SlideShow can demonstrate your favorite web sites, software or images.

## To give guided tours of the web

SlideShow can walk users through web sites to show them special sites or as a way of demonstrating how the web works.

## To make web shows

**SlideShow can create stand-alone web shows to be run on the web or distributed on CD-ROM or other media.**

## Features of the Pro version

SlideShow Pro is an advanced version of SlideShow. Registered users are automatically upgraded to the Pro Version when they register their software. The new Pro version features include:

- **Unlimited show size**  
SlideShow Pro has no limit to the number of slides in a show.
- **180 days technical support**
- **Free upgrades within release (i.e. 1.x.x)**  
Users are notified via E-mail of all major releases.

## Making a Multimedia Slide Show

To make a multimedia show using SlideShow:

- 1 Select a theme or focus of the show
- 2 Select the URLs, images or documents
- 3 Order the images in the show
- 4 Create a slide for each frame of the show
- 5 Select and record music or record voice narration for the slide
- 6 Run the show advancing through each slide to test the order and the juxtapositioning of slides in the show.

## Making a Web Based Show

Making a web show is as easy as saving a file. SlideShow takes the show that you have already prepared and makes a HTML based show

beagle software

that can be run by any Java enabled web browser, including later versions of Internet Explorer and Netscape Navigator.

A web show can be opened from any web browser by opening the web start page, which contains a link to the web show page. The web show page contains the show's navigation controls and references to all the slides in the show. The show opens each site or file and pauses for time period specified before loading the next slide. The slides can contain the same documents as make up a regular slide show: web sites, images or regular files.

You can also add sound to play with the slide. The sound file is opened in a separate window and is played as soon as the site is opened. The browser must support '**wav**' files for the sound file to be heard.

## Web Show Uses

- Make public slide shows and put them on your web site.
- Make self-contained slide shows on CD-ROMs, Jazz disks or even floppy disks!
- Trade collections of favorite web sites
- Make Guided Tours of the Web with Voice Over
- Quickly make tutorials or instructional web based guides

## How it Works

- User opens start page with web browser.
- User starts show by pressing "Start Show" button, opening show window
- Show page contains the controls for navigating the slides in the show.
- User presses a navigation button, for example the 'Auto` button. Show loads the slide and displays it in the main browser window.
- User can open a single slide from the pull down slide list or by entering the number in the slide number window.
- When done, user presses the 'End' button, closing the show window and returning to the start form.

## The Web Show Controls



**<<Prev** and **Next>>** buttons move backwards or forwards in the show.

**Auto** will start the automatic SlideShow, advancing through each slide.

**Pause** will stop a show at the current slide.

**Hide** will send the navigation window behind the active window.

**End** will end the show, close the navigation window and return to the start page.

The controls provide a subset of the same controls used in SlideShow:

- Manual Mode - Move within shows using forward and back buttons, by selecting a slide from the pull down menu, or by entering the slide number in the window.
- Auto - Pressing the Auto button starts the timed sequence of slides. Each slide is shown in the order they were listed in SlideShow. Slides pause for the time requested. Every slide is shown in order. The show wraps to the beginning when all slides have shown.

## Deploying a Show on the WWW

The web show feature lets you create stand-alone shows that can be deployed on the Web.

To put a show on the web:

1. Prepare show in SlideShow
2. Edit and test show in SlideShow.
3. Open the Web Show creation screen directly from the file menu (**File->SaveAs->WebShow**) or by using the New Show Wizard.
4. Run the Audit on the prospective show. Check the show for local paths (which won't work on the web.)
5. Generate the 2 web show pages by pressing the **Make Show** button.
6. Test Web Show by pressing the **Test** button.
7. Move start show page and web show page to web site
8. Move referenced slides to web site carefully observing the placement path (if any).

beagle software

9. Link the Start Show page to other web pages. The start show page gives users a starting point for running and ending the show.

## Tips

- A web show that only references external web sites has only two HTML pages - a Start Show page and a Web Show page.
- Browsers have differing display characteristics and vary widely in their rendering of HTML pages and files. Check the show by viewing with several different types of browsers.
- Browsers have different security properties and may react differently to file permissions and paths when files are included in shows.
- Referenced files not in the same directory as the show files may need to have a complete web path to be found by the browser. Netscape Navigator is very specific about the type of path it accepts.
- Putting all files (show files and documents) used for a web show in the same directory is often the best way to get things going quickly.
- While sound is an exciting addition to web based shows, sound files are extremely large and can take a long time to download.

## Show Control Options

During a show, the showing of slides can be controlled in a variety of ways.

The following list the different ways that a user can control an actual show:

### **From the Main Screen:**

- Navigation keys on control bar.
- Using the Control menu options.
- Using shortcuts (i.e. Control+B = Back) The shortcut, when available, is shown in the right column of the pull down menu.
- By dragging the slider on the show control bar.
- With the right, middle and left, mouse buttons when the cursor is moved over the remote control icon on the navigation control bar.

### **From the Full Screen Control Bar:**

- Using the mouse buttons to access the popup Control and View menus:  
Left mouse button contains the control functions (forward, back, pause).  
Shortcuts are shown when the menus are visible. (Make the menus visible with the middle mouse button.)  
Show and display options are available under the View menu.

Note: The main screen can also be kept visible when in the full screen with the **Keep on top** option available from the **View** menu.

## **Technical Information**

### **How SlideShow Works**

The following is a summary of the steps SlideShow performs

beagle software

when a slide show is run:

1. SlideShow is started. SlideShow starts a copy of Internet Explorer or Netscape Navigator and establishes an automation link.
2. A slide show is started by the user pressing the "Show" button
3. SlideShow runs the slides in the slide show collection
4. The browser displays the slide.
5. The sound file (if any) is played in background.
6. The system pauses the seconds specified in the pause time field if specified or pauses for the default time period if none is specified or "use default" is selected.
7. SlideShow goes through all the slides in the collection if in the sequential mode or randomly selects the next slide if in the random mode.
8. SlideShow will end after the last slide if showing "once", or will start over if in the continuous mode.

## System Demands of SlideShow

The demands of SlideShow, when used in most modes are minimal.

**Internet Traffic:** SlideShow adds no additional Internet traffic other than the demands made on its behalf by the native web browser.

**System Resources:** SlideShow spends most of its time in the sleep mode, waiting for the next slide to be shown or waiting for user input. SlideShow uses one of the native operating system timers, which are finite in number.

Testing has shown that most users experience approximately a 1% increase in system utilization when viewed by the NT System Monitor when in the sleep mode with less than 5% increase when actually running a show.

## SlideShow Specifications

System Requirements

- Windows 95/98, Windows NT (Service pack 3 or later) or Windows

2000

- Microsoft Internet Explorer or Netscape Navigator web browser installed. SlideShow will also work with most DDE compliant browsers – check the Beagle Software web site for a list of browsers. Version 4 or 5 of Internet Explorer offers several additional display features, such as full screen theatre mode, which can be controlled in SlideShow through OLE automation.
- Sound card with speakers and microphone if sound accompaniment is desired.

## Technical Support Troubleshooting

### Image won't display

Web site is unavailable, connection is down or web address is wrong.

Slide file is in incorrect format. Try opening directly from web browser.

The web browser is incompatible.

### Browser starts but won't work with SlideShow

The browser has a correct application path specified but the automation between slide show and the browser is not active.

Try a different setting under the **Options->Browser** menu on the main screen. Some older browsers (like Internet Explorer version 2) have limited functionality. For best results the latest version of the browser should be installed.

### My browser won't start with SlideShow

Not all browsers have the necessary automation hooks that SlideShow needs to control a slide show. If your browser won't start when SlideShow starts then try selecting the DDE compliant setting under the Options->Browser menu and find the program path using the Browse button. For a list of compatible browsers check the Beagle Software web site.

### Certain features in SlideShow aren't available to me

SlideShow uses program to program automation to control the

beagle software

slides in a show. There are two ways of automating that control, DDE and OLE. OLE is the latest means of automation and has the richest feature set that allows for full screen mode, multiple show windows and slide load progress monitoring. DDE is an older technology and does not have the full feature set available that OLE automation offers. To check what kind of automation you are using check the automation window in the Browser Type screen under the **Options->Browser** menu.

### Internet Explorer won't stay minimized when show is running

In the DDE automation mode, each time a slide is displayed the browser screen is displayed -- even when the browser was minimized and in the taskbar. This is a characteristic of the DDE automation implementation in Internet Explorer.

### Program focus regularly shifts to browser when show is running

In the show mode, every time a slide is displayed causes the browser screen to briefly get program focus (browser banner changes to the active color) during each slide loading. This is a characteristic of automation process. To pause the action to allow access to other programs use SlideShow's Pause or Stop control buttons.

### There is no sound, though sound file is assigned

Speech file is missing or path is incorrect.

Speech file is in an incompatible format. Try playing the file by double clicking it and playing it with the default Windows player.

Speech card inoperable. Verify sounds in Windows control panel.

### Web Based Shows Fail to Run

Most problems with web shows involve references to slides which include full path names (i.e. C:\images\myslide.jpg). Invariably, the directory path on your webserver is different from your Windows file system so avoid using paths in specifying slides. Before creating a web show, check that all the slides in the Show Editor have no path. If you must use a path, use a relative path (i.e. \images\myslide.jpg) Generally, it's easier to create Web Shows when all the slides have no path (i.e. myslide.jpg) and are located in the same directory on the web server.

Make sure that the directory you are using on the web server is

accessible publicly from the web. To verify this you should be able to view a slide by entering its URL in your browser.

Sound and music files are typically very large and are often impractical for web shows since the time needed to download the sound file would be excessive. If you do use sound in web shows, keep it short!

### Registration screen appears at startup

Software has not been yet been registered, registered software will skip the Registration screen.

The Windows System Registry has been altered or corrupted, re-enter the Key Code to re-register.

## SlideShow Diagnostic Routine

If you are having problems running SlideShow, you can run SlideShow in the diagnostic mode that provides a trace log to pinpoint problems. The following steps will run SlideShow with the diagnostic trace turned on and allow you to view the trace file. (DebugFile.txt)

1. Exit SlideShow if currently running.
2. Restart SlideShow in diagnostic mode by adding the 'debug' argument to the command line, typically:

```
C:\Program Files\Beagle Software\SlideShow\SlideShow.exe debug
```

3. Choose the DemoShow or another show.
4. Run the show by pressing the **Show** button.
5. Run the application till an error is encountered. Exit the application.
6. View the diagnostic trace by opening it in Notepad. The debug file can be found in the root SlideShow directory, usually:

```
C:\Program Files\Beagle Software\SlideShow\DebugFile.txt
```

7. Check for "ERRORS" or problems in the trace.
8. Contact Beagle Software for assistance in interpreting the trace and pinpointing the problem.

## **Obtaining Technical Support**

### **Web site**

Latest product updates and technical information are available on the Beagle Software Web site at <http://www.beaglesoft.com>

### **E-mail**

Send E-mail requests for technical support to [support@beaglesoft.com](mailto:support@beaglesoft.com). Please be as specific as possible including the program version and the steps to recreate the problem, if possible.

### **Phone**

voice: (612) 377-9356  
fax: (612) 971-2312

## **Beagle Software**

### **General Information**

Beagle Software, founded in May 1997, supplies innovative and useful Internet enabled Windows programs that bring the power of the Internet to the desktop of the user.

Beagle Software is located in Minneapolis, Minnesota, just slightly West of the Mississippi River.



## Ordering Information

Ordering over the Web

<http://www.beaglesoft.com/OrderForm.htm>

Ordering via E-mail:

[sales@beaglesoft.com](mailto:sales@beaglesoft.com)

Ordering by Mail:

Beagle Software

1946 Sheridan Avenue South

Minneapolis, MN 55405

USA

Ordering by Fax

+1 612 971-2312

Ordering over the phone

+1 612 971-2112

+1 877 845-2549 toll free (US)

## Warranty/License Agreement

SlideShow® Copyright © 1997-1999 by Beagle Software. All rights reserved.

### License Agreement

You should carefully read the following terms and conditions before using this software.

Use of this software indicates your acceptance of this license agreement and warranty.

For information on distributing the shareware evaluation version of SlideShow see the section titled Shareware License.

### Registered Version

One registered copy of SlideShow may either be used by a single person who uses the software personally on one or more computers, or installed on a single workstation used non simultaneously by multiple people, but not both.

### Limited Warranty

Limited Warranty. Beagle Software warrants that this product will perform in accordance with the included documentation for a period of **180 days** from the date of receipt and that Beagle Software will, at its own discretion, shall make commercially reasonable efforts to solve any problem issues. This Limited Warranty is void if failure of the software product has resulted from accident, abuse or misapplication.

### Governing Law

This agreement shall be governed by the laws of the State of Minnesota.

### Limitation of Liability

THIS SOFTWARE AND THE ACCOMPANYING FILES ARE SOLD "AS IS" AND WITHOUT WARRANTIES AS TO PERFORMANCE OF MERCHANTABILITY OR ANY OTHER WARRANTIES WHETHER EXPRESSED OR IMPLIED, NO WARRANTY OF FITNESS FOR A PARTICULAR PURPOSE IS OFFERED.

Good data processing procedure dictates that any program is thoroughly tested before relying on it. The user must assume the entire risk of using the program. ANY LIABILITY OF THE SELLER WILL BE LIMITED EXCLUSIVELY TO PRODUCT REPLACEMENT OR REFUND OF PURCHASE PRICE.

## *Other Products from Beagle Software*

### **CallWatch**

#### ***Saves Money on Long Distance Calls by 'Dialing Around'.***

'Dial Around' service saves customer's money by offering rates less expensive than the customer's regular long distance company. CallWatch picks the best rate available, automates the dialing, and then keeps track of calls and call cost.

CallWatch provides a way to keep track of the companies' rates, using its internal database it selects the company with the best rate for the time of day the call is being made and the place the call is being made to. Registered users of CallWatch have access to the latest rate tables from Beagle Software's web site, giving them access to call rate changes from all the major 'Dial Around' carriers. Trial users of CallWatch have experienced savings of 15 to 66% percent off their regular monthly long distance bill. CallWatch takes the hassle and grunt work out of using 'Dial Around' services.

CallWatch:

- Picks the best company with the lowest rate for the place and time called, in or out of state.
- Automates dialing the 7-digit access code and the phone number over regular phone lines.
- Times calls and keeps track of their cost.
- Stays up-to-date with the latest changes in rates, new promotions and companies including monthly service charges.
- Allows users to view call usage by carrier.
- Includes a powerful contact manager, with key word search capability, that stores phone numbers and notes about conversations.

CallWatch is available for Windows 95/98/NT

## **ClockWatch**

*Keeps your internal computer system clock synchronized with the National Atomic clock.*

ClockWatch provides a fast and easy way to synchronize your computer system's clock to standard time over the Internet.

ClockWatch queries one of the timeservers maintained by the National Institute of Standards and Technology, which returns the exact standard time. Settings can be made on demand, on a regularly scheduled basis or automatically based on the specific experience of the local system. You set the level of accuracy desired and ClockWatch checks the time when appropriate.

Results from clock settings are graphically displayed in windows and charts showing the overall accuracy of your computer. Results of clock settings can also be logged to a file allowing you to save all activity in a text file on your computer for later review or archival. A command line mode allows users to run ClockWatch from a batch file.

**“Highly Recommended”** *PC Computing*

ClockWatch is available for both Windows 95/98 and Windows NT.

## **ClockCard**

*Real Time Clock on a PC Card*

Beagle Software's ClockCard is an accurate, temperature stable real time clock complete on a PC card.

Use ClockCard to dramatically improve the accuracy of your computer's clock. The ClockCard is a real time clock for PCs based on a highly stable oscillator circuit complete with lithium battery power.

The ClockCard will maintain time on your PC to 15 seconds/month error. If your computer is operating in a temperature stable environment, error will be less than 5 seconds/month.

The most common application for ClockCard is to simply maintain the correct time on the host computer. When installed with ClockWatch, it will set the Operating System clock to the ClockCard clock time at a user-defined interval. This allows the O/S and all applications to access to the correct time. Updates to the ClockCard's internal clock can be done automatically with ClockWatch.

beagle software

## Contact Information

### Web Site

<http://www.beaglesoft.com>

### Electronic mail

General Information & Sales:

[sales@beaglesoft.com](mailto:sales@beaglesoft.com)

Reseller Information:

[reseller@beaglesoft.com](mailto:reseller@beaglesoft.com)

Customer Support:

[support@beaglesoft.com](mailto:support@beaglesoft.com)

### Postal address

Beagle Software

1946 Sheridan Ave. South

Minneapolis, Minnesota 55405

USA

### Telephone

+1 612 971-2112 general

+1 612 377-9356 support

+1 877 845-2549 sales (Toll free US)

### FAX

+1 612-971-2312