

DocuClock®

OATS Compliant Time Stamper

DocuClock® is a full-featured, premium software/printer combination that provides a time and date stamp with an assortment of user-selectable print formats and time displays.

DocuClock® was developed specifically for securities firms required to comply with the OATS (Order Audit Trail System) mandate (Rule 6953). It also works well for any industry or organization that needs an accurate, documented time record for research or audit purposes.

The DocuClock® package includes a small desktop printer (7" by 7.5" by 4"), cable interface and power supply, printer ribbon and manuals, ClockWatch® Pro clock synchronization software for the PC to which DocuClock® is connected, and DocuClock® software to send the time signal to the printer.

DocuClock® offers a rugged construction and attractive design that is perfect for office, laboratory or industrial environments. **Both the software and printer are easy to install and use**, and do not require dedicated systems or wiring.

Availability

DocuClock® is in stock and ready for same-day shipment.

DocuClock Printer and Software

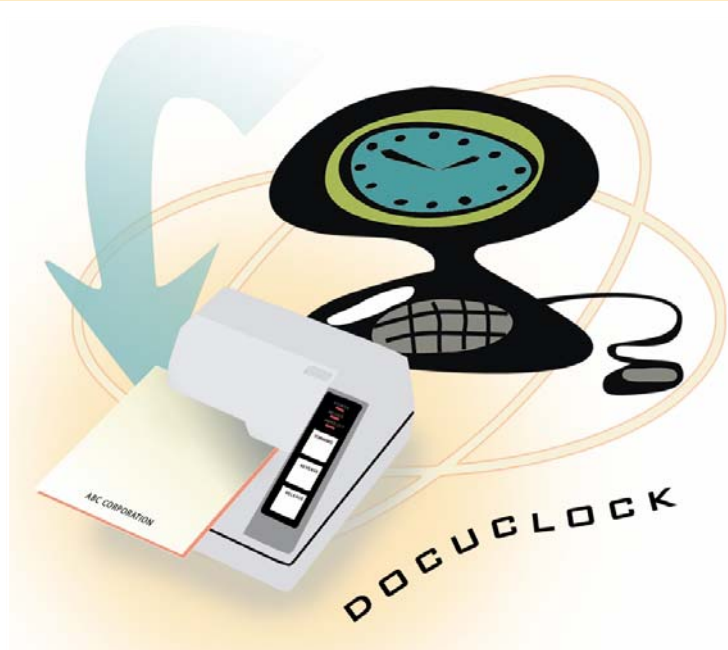
DocuClock® is available for Serial or Parallel ports

DocuClock® Serial interface	-\$795.00	sale \$745.00
DocuClock® Parallel interface	-\$795.00	sale \$745.00
USB to Serial Adapter	\$29.00	

(Allows you to use the DocuClock® Serial on your USB-equipped laptop or desktop computer)

Volume discounts apply; contact Beagle Software at 1-877-845-2549 for a quote. Overnight delivery available to most locations. Complete packate includes printer and ribbon, software, power supply, connection cable, documentation and installation video (on CD).

DocuClock® and ClockWatch® are registered trademarks of Beagle Software, Inc.



www.DocuClock.com

\$745.00
sale price

- **On NASD's list of solutions for OATS compliance.**
- **Used by NASD members around the country.**
- **Available exclusively from Beagle Software.**



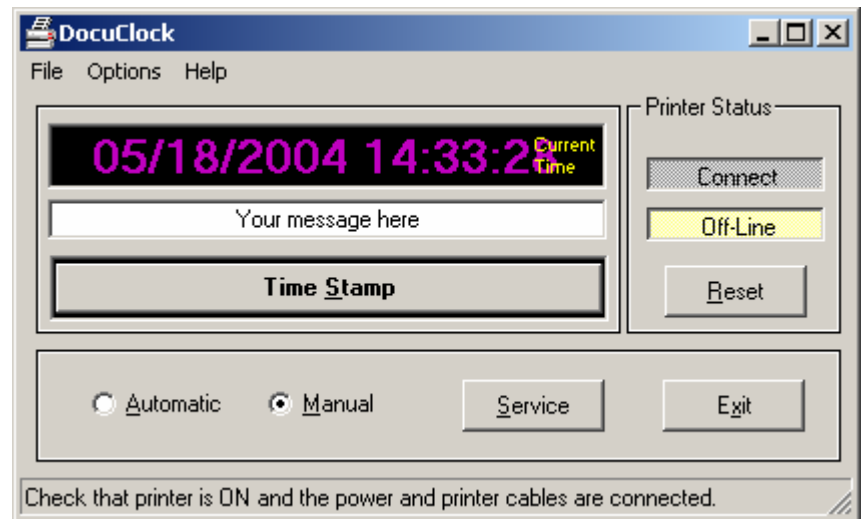
beagle software
www.beaglesoft.com

800 Washington Ave N, Ste. 418
Minneapolis, MN 55401 USA
877-845-2549

www.beaglesoft.com

Key DocuClock Features:

- **Atomic Clock Accuracy:** Using the ClockWatch® software the host computer can be set to receive a time at any time, including automated or manual time settings. The time signal can be received through a modem or the Internet.
- **Synchronized Time:** The host computer sends an accurate time signal to the printing unit every time a time stamp is made, including date and time in seconds.
- **OATS Compliant:** Ideal for securities traders who must show seconds on their trades as required by NASD-OATS and the SEC regulations.
- **User-Selectable Print Formats:** with standard or custom messages. Prints year, month, date, hours, minutes, seconds, milliseconds.
- **Automated Activity Log:** A log entry is added every time a timestamp is printed. ClockWatch® also logs every time setting.
- **Fail Safe Mode:** DocuClock® prints only accurate readings. Unlike other time print systems, DocuClock® will print the time only if it gets a reading from the clock running on the host computer. Other time clocks can accumulate several seconds of drift between readings.
- **Automatic "no print":** If for some reason DocuClock® does not receive a signal, the time will not be printed.
- **Scaleable:** Compatible for upgrade to ClockWatch® Server and Client solutions, as well as GPS or radio time synchronization options.



Printer Features:

- **Auto Print:** Dual optical paper sensors print automatically whenever a paper slip is introduced.
- **Multiple layers:** Shuttle impact dot matrix print head impresses multiple layers of carbon or carbonless paper (three layer minimum; actual performance depends on paper thickness).
- **Desk Friendly:** The desktop DocuClock® time stamp unit measures only 7 by 7.5 by 4 inches. It is available in light gray color.
- **Ribbon Cartridge:** Snap-in ribbon cartridge; ribbon life of 1.5 million characters (replacements are available).
- **Commercial Quality:** Unit is designed for years of dependable service; the print head has an expected life of seven million stamped lines. The printer has a 12 month warranty.

